

HFC-6500

SERIES

SPECIFICATIONS



GENERAL SPECIFICATIONS

	6517	6521	6526	6531
CRANE CAPACITY RATING	65,500 FT. LBS.	65,500 FT. LBS.	65,500 FT. LBS.	65,500 FT. LBS.
MAXIMUM REACH (FROM CENTERLINE)	17' 0"	20' 8"	26' 3"	31' 6"
TIP HEIGHT *	27' 4"	30' 6"	35' 3"	40' 6"
HYDRAULIC EXTENSION (2 STAGES)	36"	66"	132" (2 STAGES)	132" (2 STAGES)
MANUAL EXTENSION	—	—	—	63"
ROTATION (STANDARD)	370 DEGREES	370 DEGREES	370 DEGREES	370 DEGREES
CRANE WEIGHT	3050 POUNDS	3550 POUNDS	3700 POUNDS	4100 POUNDS
STORAGE HEIGHT (CRANE ONLY)	93.7"	93.7"	93.7"	93.7"
STORAGE WIDTH (BOOM ONLY)	84.2"	94"	94"	94"
OUTRIGGER SPAN (H-FRAME TYPE)				
RETRACTED	97"	97"	97"	97"
EXTENDED	149"	149"	149"	149"
MOUNTING SPACE REQUIRED **	28.75"	28.75"	28.75"	28.75"
MINIMUM PUMP CAPACITY/MINUTE	8 GALLONS	8 GALLONS	8 GALLONS	8 GALLONS
OIL TANK CAPACITY (APPROX)	20 GALLONS	20 GALLONS	20 GALLONS	20 GALLONS

* LIFT HEIGHT WHEN MOUNTED ON 39" (99.06 cm) HIGH TRUCK FRAME.

** ALLOW MINIMUM 4" (10.1 cm) ADDITIONAL BETWEEN CAB AND CRANE FOR ROTATION CLEARANCE. DISTANCE MAY VARY BY TRUCK MODEL.

CYLINDER DATA

	BORE	STROKE
MAIN BOOM CYLINDERS	3.5"	35.625"
FOLDING BOOM CYLINDER	4.5"	45.125"
EXTENSION CYLINDER		
SINGLE STAGE (6517)	3.0"	36"
SINGLE STAGE (6521)	3.0"	66"
TELESCOPIC STAGE 1 (6526, 6531)	4.0"	66"
TELESCOPIC STAGE 2 (6526, 6531)	2.5"	66"
STABILIZER CYLINDERS (H-FRAME)		
DOWN (STANDARD)	2.5"	24"
EXTEND (OPTIONAL)	1.5"	26"
A-FRAME STABILIZERS	3.25"	37.562"

LOAD RATINGS

6'	(1.83 M)	10900 POUNDS	4945 KG
8'	(2.43 M)	8150 POUNDS	3697 KG
10'	(3.04 M)	6550 POUNDS	2971 KG
15.25'	(4.64 M)	4275 POUNDS	1939 KG
20.75'	(6.32 M)	2950 POUNDS	1338 KG
26.25'	(8.00 M)	2175 POUNDS	986 KG
31.5'	(9.60 M)	1500 POUNDS	680 KG



HFC-6500 SERIES

OPERATION DATA

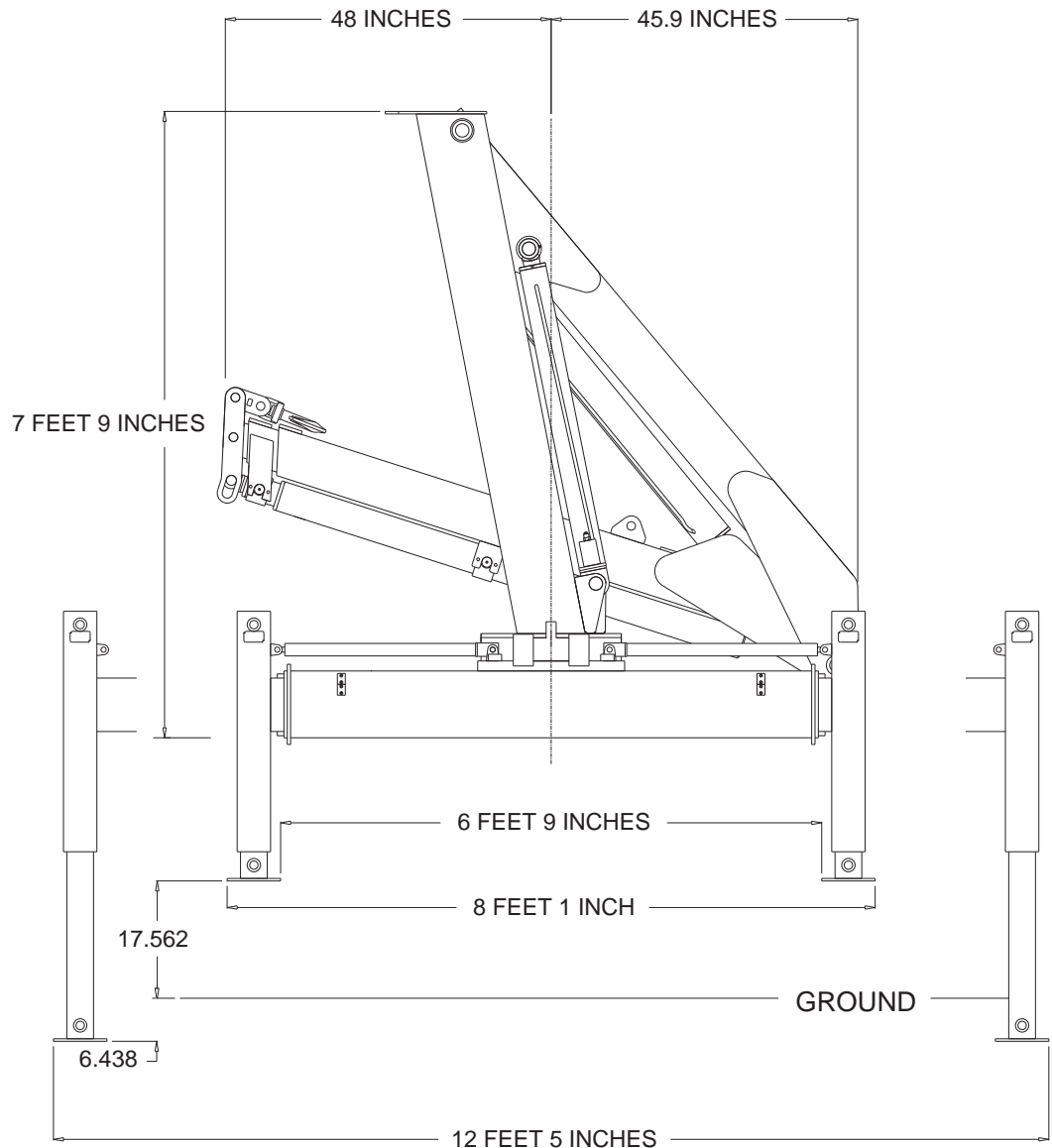
ROTATION 370 DEGREES	40 SECONDS
MAIN BOOM ELEVATION	26 SECONDS
KNUCKLE BOOM ARTICULATION	24 SECONDS
BOOM EXTENSION (2 STAGES TOTAL)	40 SECONDS
STABILIZER DOWN EXTENSION (H-FRAME)	9 SECONDS EACH
STABILIZER OUT EXTENSION (H-FRAME)	7 SECONDS EACH

SPEEDS ASSUME 8 GPM FLOW AND NO LOAD CONDITION.

RECOMMENDED TRUCK CHASSIS

	CAB STYLE	
	CONVENTIONAL	CABOVER
WHEELBASE	189" (4800 mm)	164" (4165 mm)
CAB TO AXLE DISTANCE (CA)	120" (3048 mm)	144" (3657 mm)
FRONT AXLE RATING	9000 POUNDS	4082 KG
REAR AXLE RATING	17500 POUNDS	7938 KG
GROSS VEHICLE WEIGHT RATING	26000 POUNDS	11796 KG
FRAME SECTION MODULUS	18 CUBIC INCHES	296 cc
RESISTING BENDING MOMENT (RBM) 50,000 PSI FRAME	900,000 IN. LBS.	10375 KG-M

STORAGE CONFIGURATION: H-FRAME STABILIZERS



COUNTERBALANCE SAFETY VALVES

The inner, knuckle and extension boom cylinders are equipped with pilot operated counterbalance valves integral to the cylinder on the load holding sides. The stabilizer cylinders are equipped with dual pilot operated check valves.

The counterbalance valves positively hold the load during normal operations. The valves additionally provide collapse protection in event of a hydraulic system failure or hose break. The counterbalance valves further control the metering of lowering functions and provide thermal relief protection in event of hydraulic oil expansion due to ambient temperature conditions.

The dual pilot operated check valves positively lock the cylinder in position until the operator intentionally controls that function.

OPTIONAL EQUIPMENT AVAILABLE

BOOM OPTIONS: The 6500 series is available with several boom configurations to meet various reach requirements. The shortest available boom is model 6517 with reach to 17 feet. Model 6521 has one hydraulic extension. Model 6526 has two hydraulic extensions and model 6531 has two hydraulic extensions plus a manual pullout.

STABILIZER OPTIONS: The 6500 series cranes are available with either H-Frame out and down type stabilizers or A-Frame angled stabilizers.

HYDRAULIC STABILIZER EXTENSION: Provides two each 2.00" bore cylinders for hydraulic extension of stabilizers. This option utilizes the 7th and 8th valve sections unused with the standard crane. This option available for H-Frame type outriggers only.

HYDRAULIC WINCH: Boom mounted winch system provides hydraulic motor driven winch with 5000 pounds (2268 KG) single line pull. Winch option is equipped with complete hydraulic winch installed with 85 feet (25.9 M) of 7/16" (11.1 mm) diameter cable, moveable sheave block and ball bearing swivel hook with latch. An additional directional valve is included when crane is also equipped with optional hydraulic stabilizer extensions.

ANTI TWO-BLOCK SYSTEM: Boom tip weighted switch and two unloading solenoid valves are provided to stop boom extension and winch raise functions in event of accidental operation of the winch hook into the boom tip. System provides protection of crane components and ensures operator safety. This option available only with above hydraulic winch option.

ROTATION SYSTEM

Slewing is accomplished by means of a rotation turntable bearing driven by a low-speed, high-torque motor through a reduction gearbox by means of a spur gear pinion.

HYDRAULIC SYSTEM

The 6500 Series hydraulic system utilizes a PTO driven pump providing the minimum 8 gallons per minute hydraulic flow at 2600 PSI system pressure. An eight section stack type valve is provided as standard equipment. The standard 6500 crane configuration utilizes 6 of the valve sections, with the remaining two sections plugged, but available for use with optional equipment. Dual control stations are provided for all eight valve sections. The complete hydraulic system includes the hydraulic tank, suction line strainer, pump, 8 section directional control valve, return line filter and all required hoses and fittings.

CABLE REMOTE CONTROL SYSTEM: Option provides solenoid operated directional control valves for control of all crane functions except stabilizer functions. System includes solenoid operated directional control valve and toggle switch operated remote control pendant with 35' (10.6 M) cable.

RADIO REMOTE CONTROL SYSTEM: Option utilizes the same solenoid operated direction valve as cable remote above except is provided with a hand held control which functions by radio wave transmission and eliminates the attached cable thereby allowing unrestricted operator movement during crane operation. System has a range of more than 200' (60.9 M) and uses multiplexing signal control to assure there is no interference from other radio signals. FCC approved.

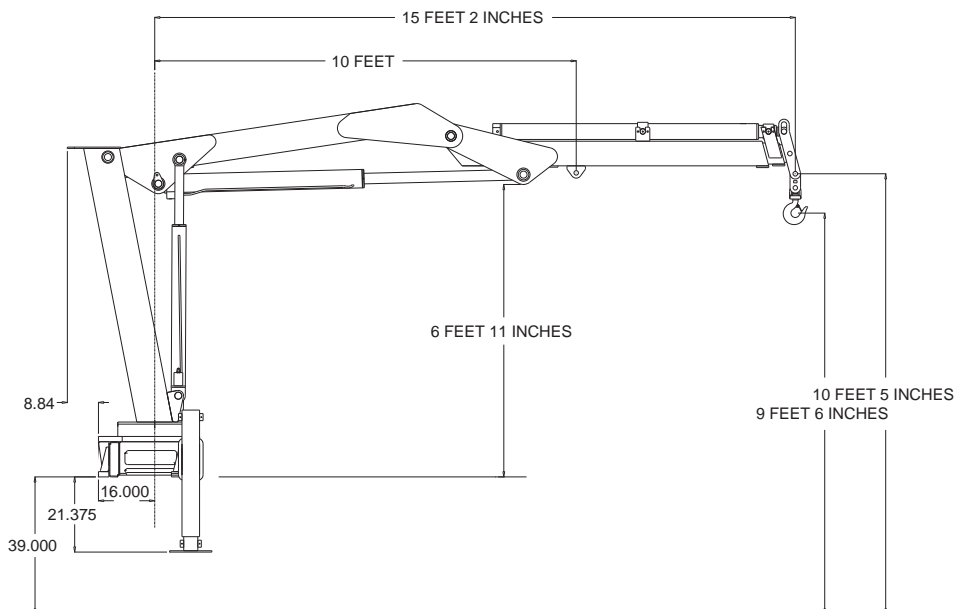
PROPORTIONAL SPEED CONTROL SYSTEM: Option incorporates a electrically controlled variable flow control valve which provides speed control of crane functions. Function speed can be varied from no movement to full speed at maximum system flow. This optional system can be used with either cable or radio remote control systems.

AUXILIARY STABILIZERS: Additional stabilizers can be provided for situations that may be required by the crane application.

BOOM TIP HYDRAULICS: Provides hydraulics routed to the boom tip for auxiliary attachments.

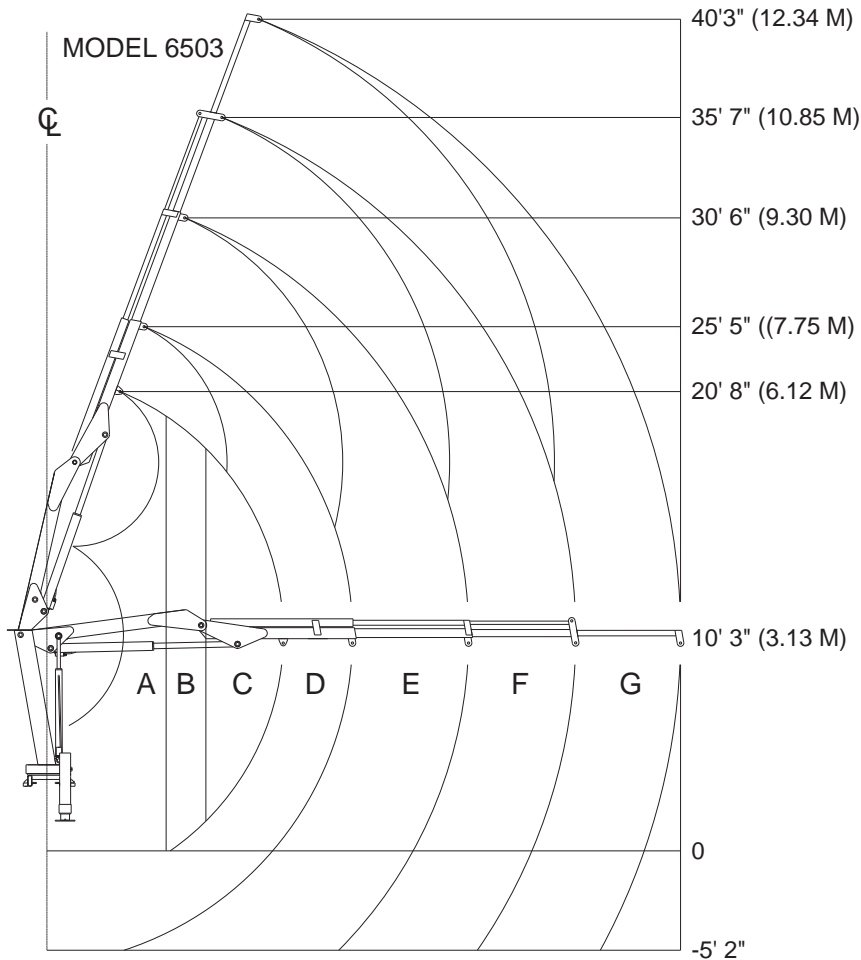
AUXILIARY ATTACHMENTS: A wide variety of boom attachments are available including rotators, clamshell buckets, grapples and pallet forks.

MODEL 6531 CONFIGURATION



HFC-6500 SERIES

MODEL HFC-6531 WORKING RANGE/CAPACITY CHART



	REACH	CAPACITY	REACH	CAPACITY	
A	6' 0" 1.83 M	10900 LBS 4945 KG	B	8' 0" 2.43 M	8150 LBS. 3697 KG
C	10' 0" 3.04 M	6550 LBS 2971 KG	D	15' 2" 4.64 M	4275 LBS 1939 KG
E	20' 8" 6.32 M	2950 LBS 1338 KG	F	26' 4" 8.02 M	2175 LBS 986 KG
G	31' 7" 9.63 M	1500 LBS 680 KG			

DEDUCT WEIGHT OF LOAD HANDLING DEVICES
WINCH LIMITED TO CAPACITIES SHOWN

Articulating Cranes

JOMAC has Articulating Cranes from 3,000 to 13,000 lb. capacities! Choose from standard models or we can work with you to design a custom Articulating Crane to meet your particular requirements.

To see more of what JOMAC can offer please visit our Web site at: www.jomac ltd.com

