

# HFC-3000

## SERIES

### SPECIFICATIONS



#### GENERAL SPECIFICATIONS

	MODEL 3016		MODEL 3019	
CRANE CAPACITY RATING	30,000 FT. LBS.	4.15 TM	30,000 FT. LBS.	4.15 TM
MAXIMUM REACH (FROM CENTERLINE)	15' 6"	4.72 M	19'	5.79 M
TIP HEIGHT *	23' 10"	7.26 M	27' 1"	8.25 M
HYDRAULIC EXTENSION	42"	106.6 cm	42"	106.6 cm
MANUAL EXTENSION	—	—	42"	106.6 cm
ROTATION (STANDARD)	370 DEGREES			
CRANE WEIGHT	1800 POUNDS	816.7 KG	1900 POUNDS	862 KG
STORAGE HEIGHT (CRANE ONLY)	71"	180.3 cm	71"	180.3 cm
STORAGE WIDTH (BOOM ONLY)	74.35"	188.8 cm	77.5"	196.85 cm
OUTRIGGER SPAN (SEE BASE CONFIGURATION DRAWINGS)				
MOUNTING SPACE REQUIRED **	23.50"	59.7 cm	23.50"	59.7 cm
MINIMUM PUMP CAPACITY/MINUTE	4 GALLONS	15.2 liters	4 GALLONS	15.2 liters
OIL TANK CAPACITY (APPROX)	10 GALLONS	37.9 liters	10 GALLONS	37.9 liters

\* LIFT HEIGHT WHEN MOUNTED ON 34" (86.4 cm) HIGH TRUCK FRAME.  
 \*\* ALLOW MINIMUM 1.5" (3.8 cm) ADDITIONAL BETWEEN CAB AND CRANE FOR ROTATION CLEARANCE. DISTANCE MAY VARY BY TRUCK MODEL.

#### CYLINDER DATA

	BORE	STROKE
MAIN BOOM CYLINDERS	2.75" (6.9 cm)	30.125" (76.5 cm)
FOLDING BOOM CYLINDER	3.5" (8.9 cm)	34.312" (87.2 cm)
EXTENSION CYLINDER	2.5" (6.4 cm)	42.00" (106.7 cm)
STABILIZER DOWN CYLINDERS	2.0" (5.1 cm)	24.00" (61.0 cm)
STABILIZER EXTEND CYLINDERS	1.5" (3.15 cm)	



**HFC-3016:** with rear corner mount configuration and service/delivery body



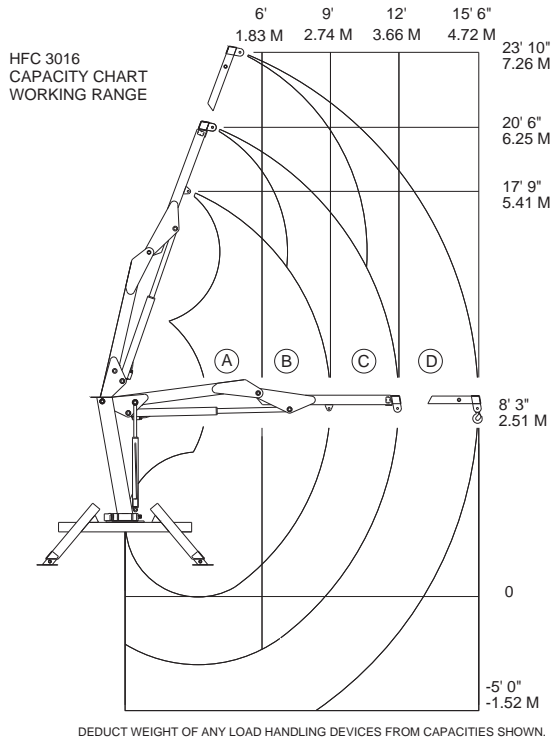
**HFC-3019:** with aluminum flatbed body



## LOAD RATINGS

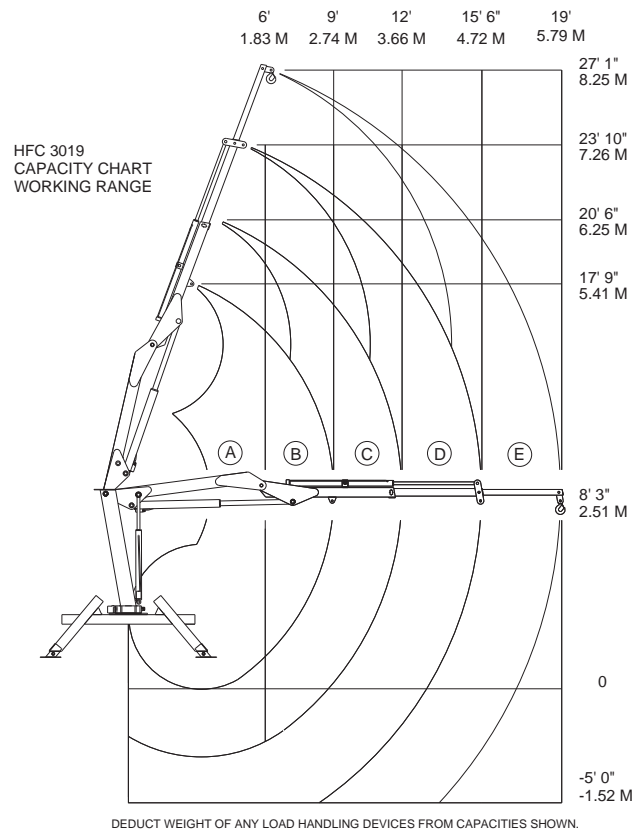
### HFC-3016 CAPACITY CHART

AREA	REACH	CAPACITY	AREA	REACH	CAPACITY
<b>A</b>	6 FEET	5000 LBS.	<b>C</b>	12 FEET	2500 LBS.
	1.83 M	2268 KG		3.66 M	1134 KG
<b>B</b>	9 FEET	3333 LBS.	<b>D</b>	15.5 FEET	1935 LBS.
	2.74 M	1512 KG		4.72 M	878 KG



### HFC-3019 CAPACITY CHART

AREA	REACH	CAPACITY	AREA	REACH	CAPACITY	AREA	REACH	CAPACITY
<b>A</b>	6 FEET	5000 LBS.	<b>C</b>	12 FEET	2500 LBS.	<b>E</b>	19 FEET	1000 LBS.
	1.83 M	2268 KG		3.66 M	1134 KG		5.79 M	453 KG
<b>B</b>	9 FEET	3333 LBS.	<b>D</b>	15.5 FEET	1935 LBS.			
	2.74 M	1512 KG		4.72 M	878 KG			



### OPERATION DATA

ROTATION 370 DEGREES	30 SECONDS
MAIN BOOM ELEVATION	23 SECONDS
KNUCKLE BOOM ARTICULATION	22 SECONDS
BOOM EXTENSION	13 SECONDS
STABILIZER EXTENSION	5 SECONDS EACH

SPEEDS ASSUME 4 GPM FLOW AND NO LOAD CONDITION.

### RECOMMENDED TRUCK CHASSIS

	CAB STYLE	
	CONVENTIONAL	CABOVER
WHEELBASE	161" (4089 mm)	132" (3353 mm)
CAB TO AXLE DISTANCE (CA)	84" (2134 mm)	110" (2794 mm)
FRONT AXLE RATING	5000 POUNDS	2268 KG
REAR AXLE RATING	9500 POUNDS	4309 KG
GROSS VEHICLE WEIGHT RATING	14500 POUNDS	6577 KG
FRAME SECTION MODULUS	11 CUBIC INCHES	181 cc
RESISTING BENDING MOMENT (RBM)	396,000 IN. LBS.	4564 KG-M



### COUNTERBALANCE SAFETY VALVES

The main (inner) boom and knuckle (articulating) boom cylinders are equipped with pilot operated counterbalance valves integral to the cylinder on the load holding sides. The stabilizer and boom extension cylinders are equipped with dual pilot operated check valves.

The counterbalance valves positively hold the load during normal operations. The valves additionally provide protection from collapse in event of a hydraulic system failure or hose break. The counterbalance valves further control the metering of lowering functions and provide thermal relief protection in event of hydraulic oil expansion due to ambient temperature conditions.

The dual pilot operated check valves positively lock the cylinder in position until the operator intentionally controls that function.

### OVERLOAD PROTECTION SYSTEM

The Model 3000 articulating crane is equipped with an overload alarm system as standard equipment.

In the event of an overload condition of the crane, the system will sense pressures in excess of allowable and will activate an audible alarm to alert the crane operator of the overload condition. The system will cease alarm and automatically reset when the load is returned to a position within specified capacities.

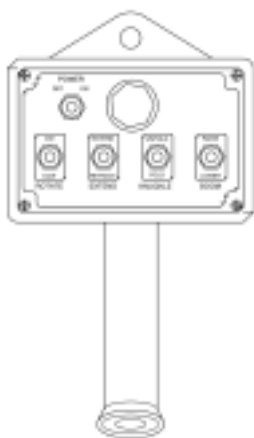
### ROTATION SYSTEM

Slewing is accomplished by means of a rotation turntable bearing driven by a self locking external helical worm gearbox powered by a low-speed, high-torque motor. Total reduction is 85:1.

### AVAILABLE OPTIONAL EQUIPMENT

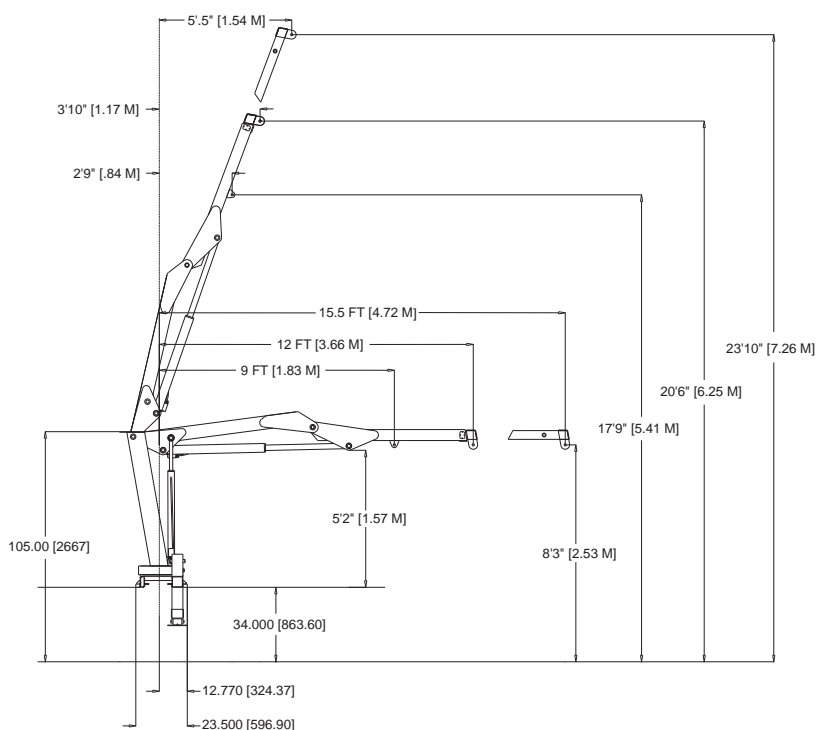
**ACTIVE OVERLOAD** – Provides hydraulic cutout of extension functions in event of overload condition. System is fully hydraulic and resets automatically.

**REMOTE CONTROL** – Provides remote control capability. 30 foot hard wired (cable) provides remote control operation of all crane functions except outriggers. Mil-spec sealed bushing toggle switches provide long life in harsh environments. Proportional speed controller allows operator to also remotely control crane function speeds. A wireless (radio control) version is also available.



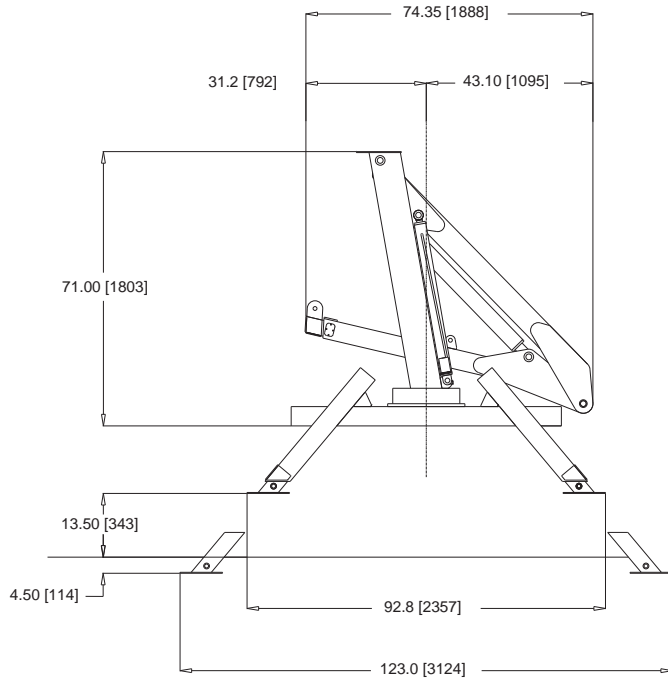
AVAILABLE  
REMOTE HARD WIRED  
OR RADIO

### HFC-3016 CONFIGURATION

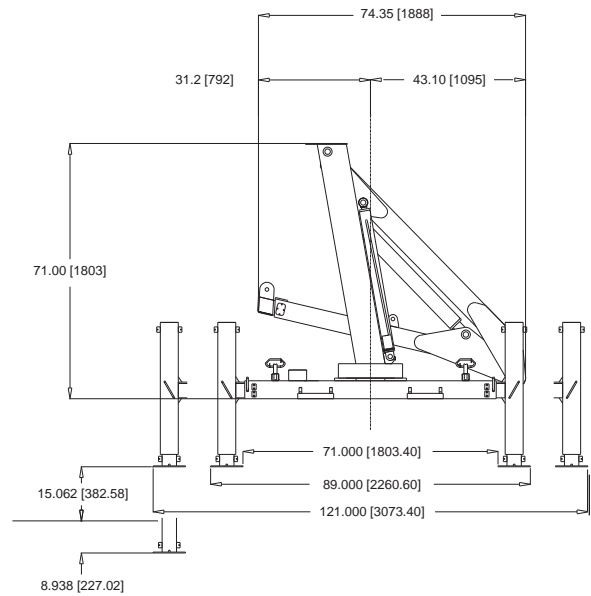


# BASE CONFIGURATION OPTIONS

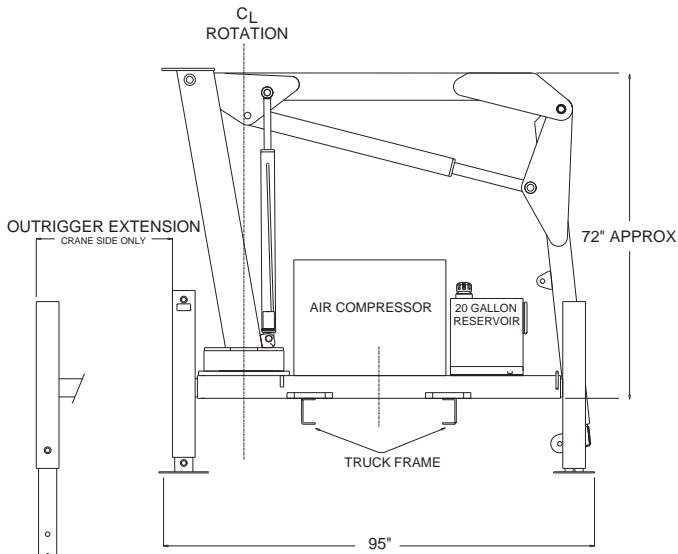
## CENTER MOUNT WITH A-FRAME TYPE OUTRIGGERS



## CENTER MOUNT BASE WITH H-FRAME TYPE OUTRIGGERS



## CORNER MOUNT BASE WITH H-FRAME TYPE OUTRIGGERS



## PEDESTAL MOUNT BASE WITHOUT OUTRIGGERS

